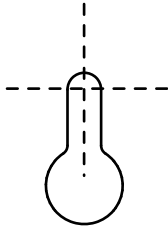




Installation Template



Prepare

- Tape template to surface
- Use a level to ensure dispenser will be mounted level
- If mounting into wallboard, use a 3/16" drill bit. If not, use a 1/8" drill bit
- Drill the four mounting screw holes at dotted line intersections. See fig. a

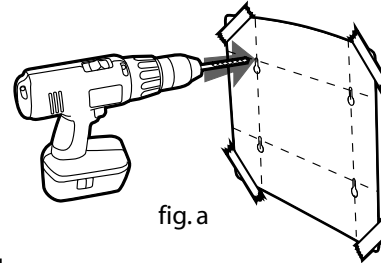
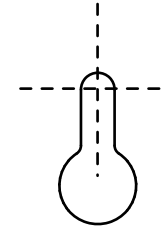


fig. a



Install

- Remove template from wall
- If mounting to wallboard, insert wall anchors
- With Phillips screwdriver, screw in all four screws until top of head is 1/4" from wall to allow dispenser to slide onto screws.
- Slide dispenser onto screws through keyholes on back. See fig. b
- Tighten upper screws. Caution: Do not over-tighten as plastic may crack

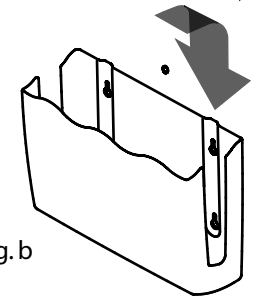


fig. b

Fill

- Carefully unwrap brick of towels making sure towels remain stacked
- Position the towels so that the bottom towel opens toward you. See fig. c
- With hands holding ends of towels, slide towels into dispenser using slots on sides to guide your hands. See fig. c
- Gently release towels. Note: Do not force towels into dispenser as it will make towels difficult to dispense.
- Center the towels in dispenser
- Place lid on dispenser
- Pull bottom towel through opening at bottom of dispenser. See fig d

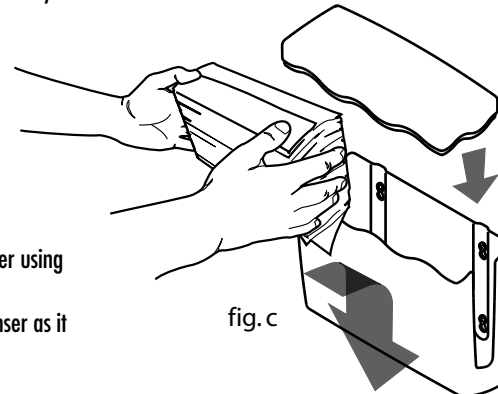


fig. c

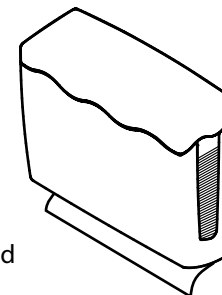
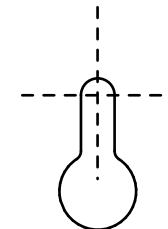
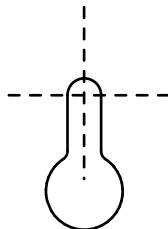


fig. d

For towel re-fills, visit us at www.brickhousedispensers.com